

FIBERGLASS FLOATINGS MOUNTED PUMP



MULTISTEEL®
CENTRIFUGAL PUMPS



Sales Department

+55 19 3546.9878

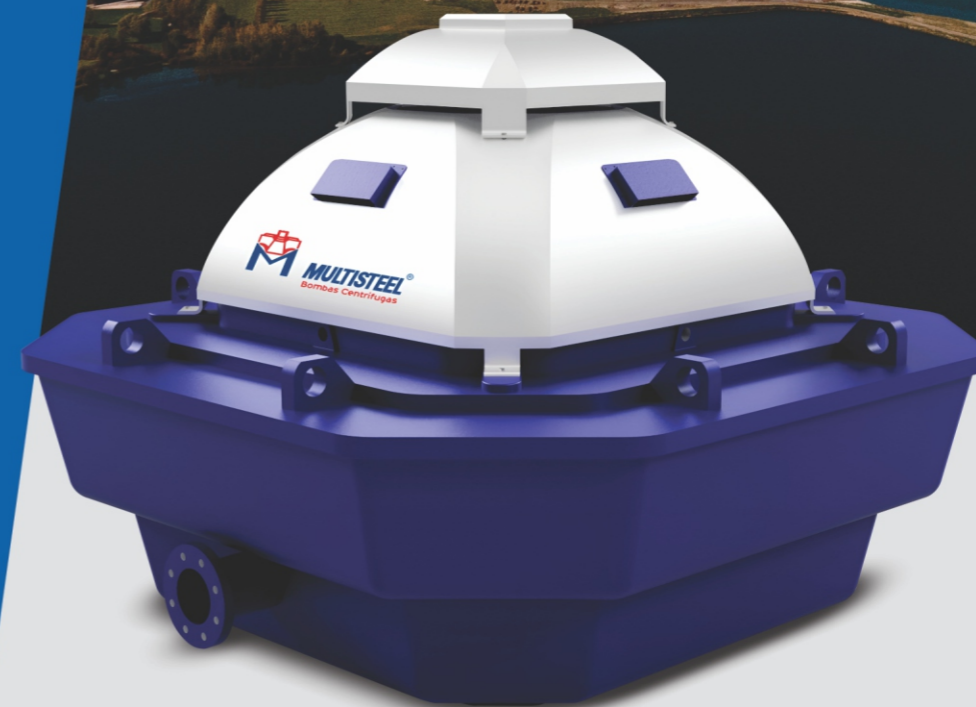
vendas@bombasmultisteel.com.br

Multisteel® Centrifugal Pumps

Rod. Washington Luiz, Km 158,6

13490-970 . Cordeirópolis . SP . BR

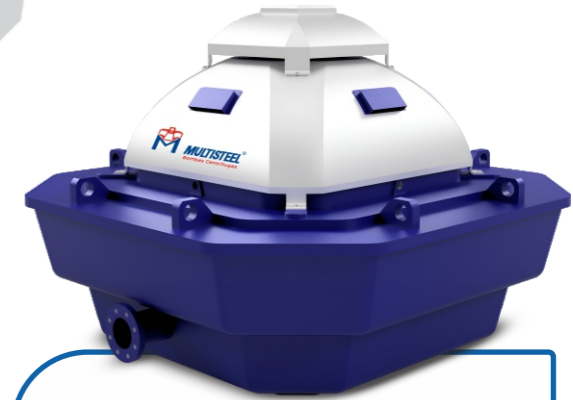
bombasmultisteel.com.br



FLOATING LINE

FLOATING LINE

DESIGNED FOR REMOVING CLEAN AND DIRTY LIQUIDS FROM AGGRESSIVE ENVIRONMENTS WITH LOW PH LEVELS AND SALTWATER



APPLICATIONS

Removing liquids from industrial environments with low pH levels.

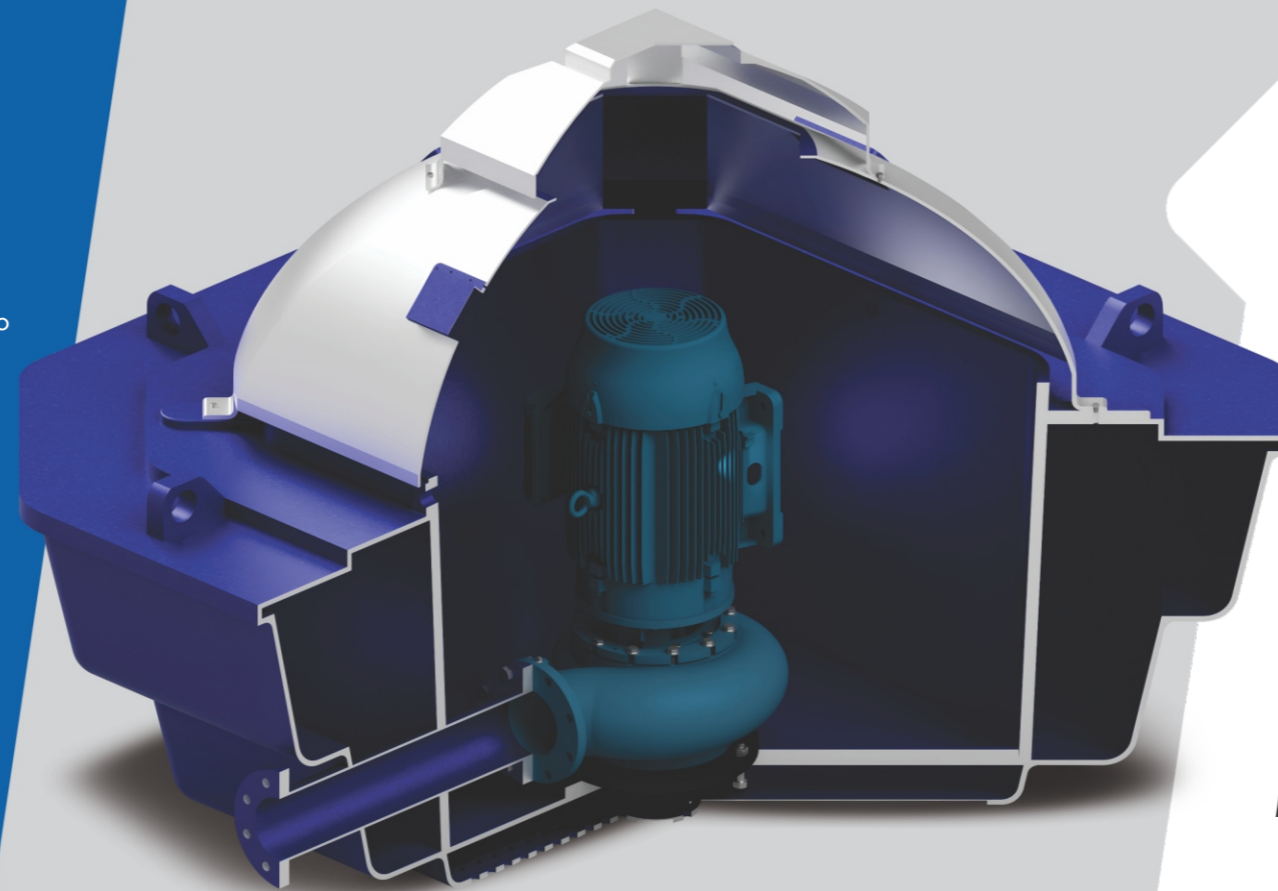
Tanks and reservoir depletion.

Draining control in places with a high flow of liquids.

Water catchment in rivers and lakes.

We present our innovative Fiberglass Floating Mounted Pump, a highly efficient solution for removing clean and dirty liquids from aggressive environments with low pH levels and saltwater.

With its resistant floatings and isophthalic and orthophthalic materials components, this pump offers high flow and durability, eliminating the need for a foot valve.



Parallel Association

The combination of parallel floatings allows a significant increase in liquid flow, increasing operational efficiency



Isophthalic and Orthophthalic Materials

The isophthalic and orthophthalic materials components ensure exceptional resistance to corrosion and aggressive environments with low pH levels



Flooded Operation

The pump will always be flooded, ensuring pumping efficiency without the need for a primer, avoiding cavitation problems



Elimination of Foot Valve

The floating structure allows the pump to operate without the need for a foot valve, reducing costs and making the system simpler



Smart Flooding Sensor

Innovative solution for monitoring and alerting about flooding risks



Fast Installation

The Floating is light, compact, and easy to handle, allowing fast installation in several environments. Its portability ensures versatility and agility in operations, making it a practical and efficient solution for monitoring and intervention in areas with water.