

*HIGH FLOW
SPLIT CASE PUMP*



MULTISTEEL®
CENTRIFUGAL PUMPS



Sales Department

+55 19 3546.9878

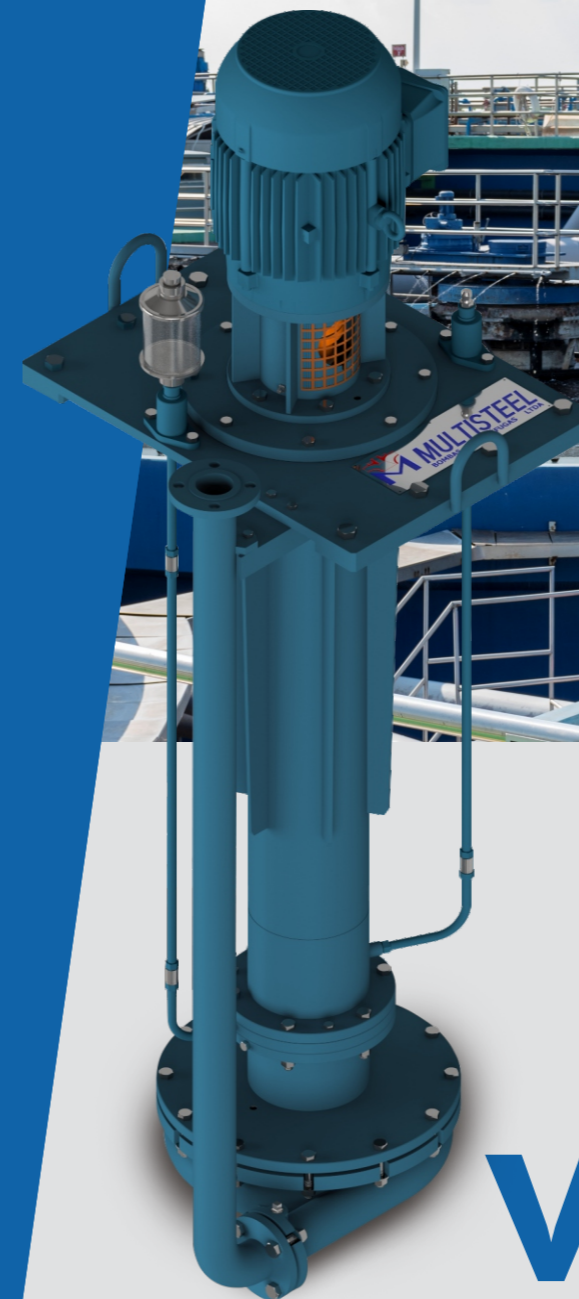
vendas@bombasmultisteel.com.br

Multisteel® Centrifugal Pumps

Rod. Washington Luiz, Km 158,6

13490-970 . Cordeirópolis . SP . BR

bombasmultisteel.com.br



VERTICAL
LINE



Submerged Pumping

Pumping in negative suction, ideal for wells and tanks.



Custom-made Projects

Up to 6 meters long (check availability for longer sizes).



Versatility

Compatible with several types of impellers (closed, opened, vortex, and semi-vortex) and fluids (clean, dirty, gummy, abrasive, dense, viscous).



Passage for Solids

Capacity of Up to 200mm.



Guaranteed Priming

To operate inside the pumped fluid, the vertical pump does not require priming.



Easy Maintenance

The motor is out of the water, eliminating the risks of burning and making maintenance simpler and safer.

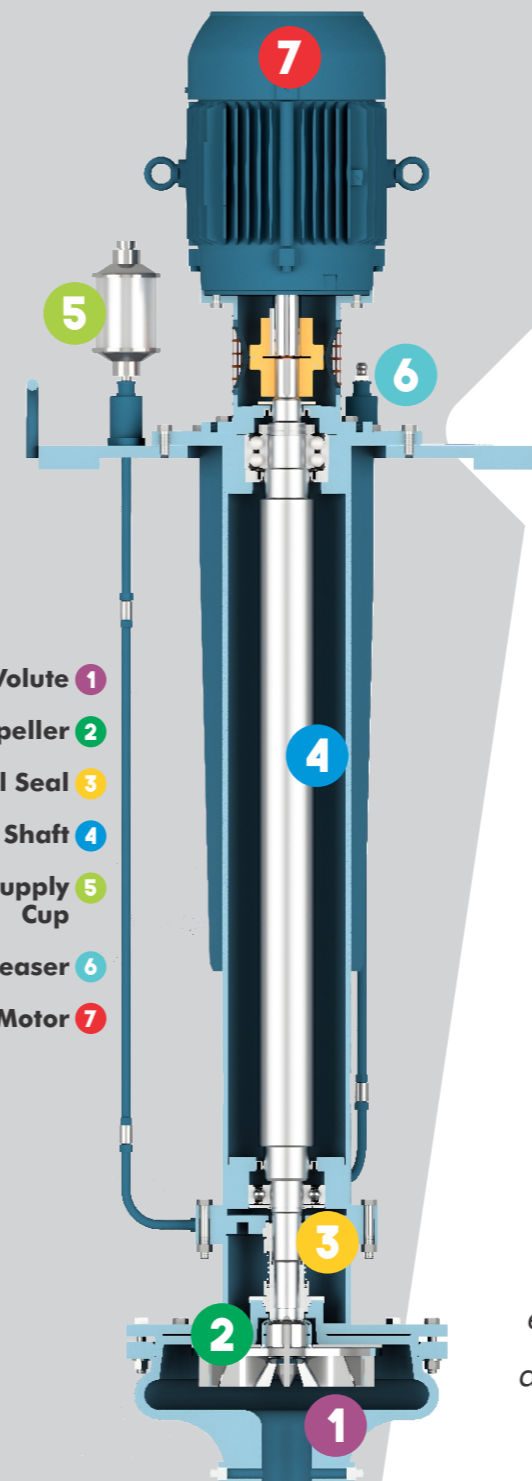
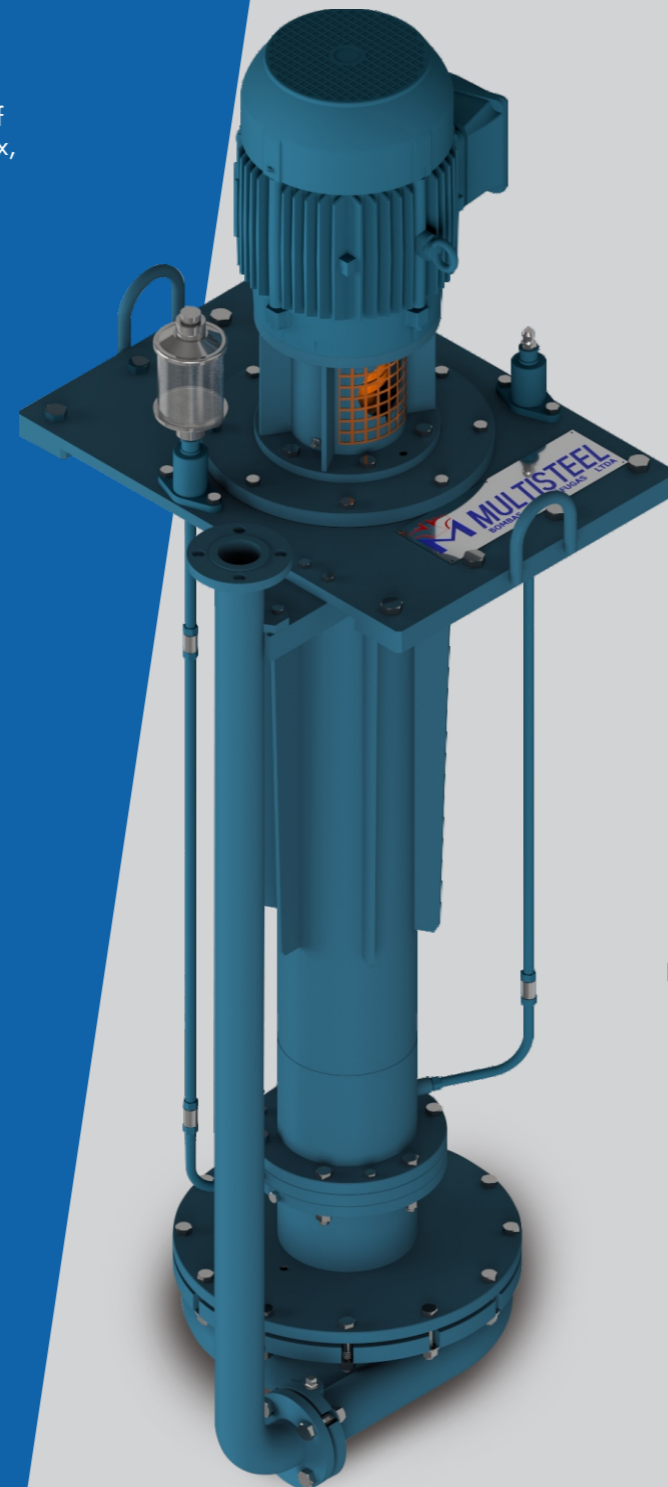
2000 m³/h

Capacity

A pumping capacity of up to 2,000m³/h.

VERTICAL LINE

DESIGNED FOR PUMPING IN NEGATIVE SUCTION



- Volute 1
- Impeller 2
- Mechanical Seal 3
- Shaft 4
- Oil Resupply Cup 5
- Bearing Greaser 6
- Electric Motor 7



CUSTOM MADE PROJECTS FOR YOUR COMPANY

Trust Multisteel to give your production a boost with efficiency and reliability. Our team of specialists is ready to help you choose the best pump to fit your needs.

Invest in Multisteel quality to get results and high performance in your company.

The Vertical Line of Centrifugal Pumps was specially designed for submerged pumping.

An easy-to-install I-shaped flange base of up to 6 meters long, with safe and reliable operation, ideal for several segments, sanitation, sugar and ethanol plants, food, among others.

